

# CERA – the technical basis for WDCC

Hannes Thiemann

Michael Lautenschlager

Deutsches Klimarechenzentrum GmbH, Germany

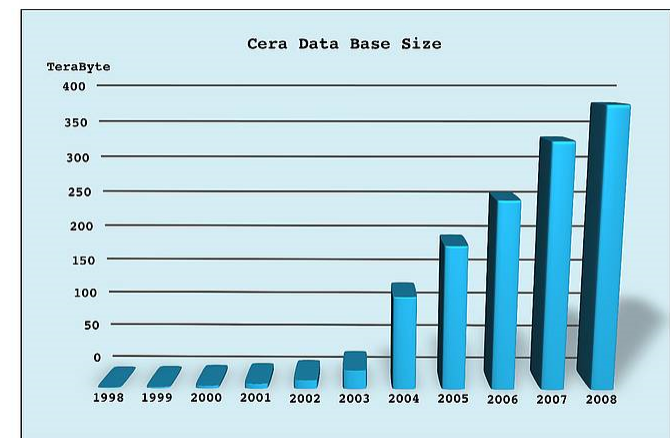
EGU 2010



# WDCC

## World Data Centre on Climate

- ▶ Approved in 2003
- ▶ Hosts several projects and Data Centres
- ▶ WDCC operates as a long-term data archive (10years +)
- ▶ WDCC is implemented within the CERA data and information system.
- ▶ Data are stored in conjunction with metadata.
- ▶ WDCC offers the publication service for primary data. (DOI)
- ▶ Approximately 5 person staff and 500 TB of data.
- ▶ Increase of a 1 PB/year starting in year 2011
- ▶ Calendar year 2009: 800 active users
- ▶ Data from
  - 80 projects
  - 1400 experiments
  - 170000 datasets
  - 8.7 Billion records
  - 1 Million downloads
- ▶ more than 255 TByte in total!



WDC  
CLIMATE



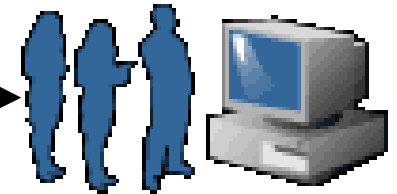
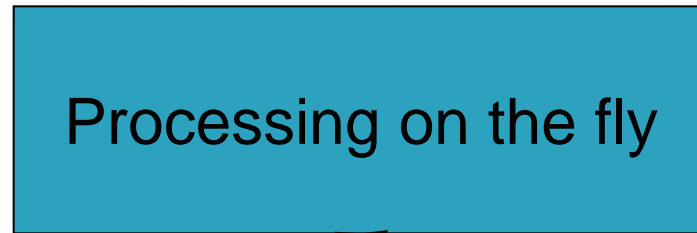
DKRZ

# World Data Centre on Climate

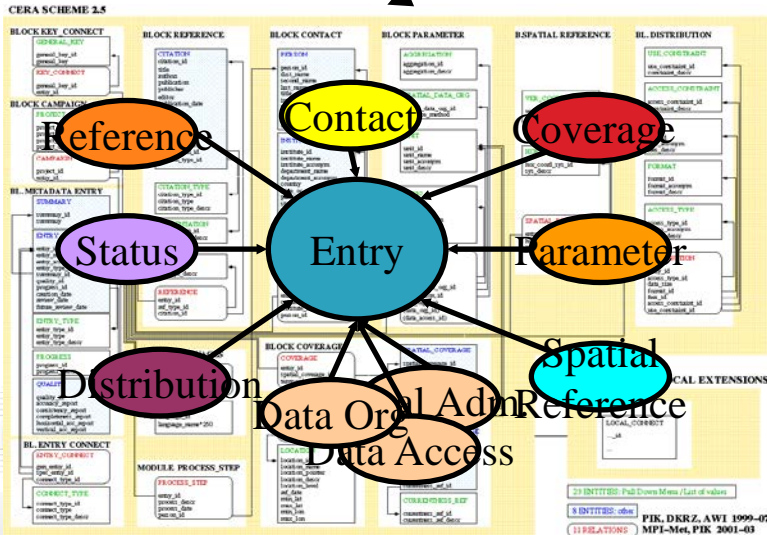
- ▶ Most active German Projects
  - COPS
  - REMO-UBA / BFG
  - CLM Consortial Runs
  - MILLENNIUM\_COSMOS
- ▶ Anticipated projects
  - CMIP5
  - IPCC AR5
    - Global and Regional
  - STORM
  - EUCLIPSE
  - And many more
- ▶ Most active International Projects
  - CEOP
  - ENSEMBLES
  - DPHASE
  - Metafor
  - IS-ENES
  - IPCC



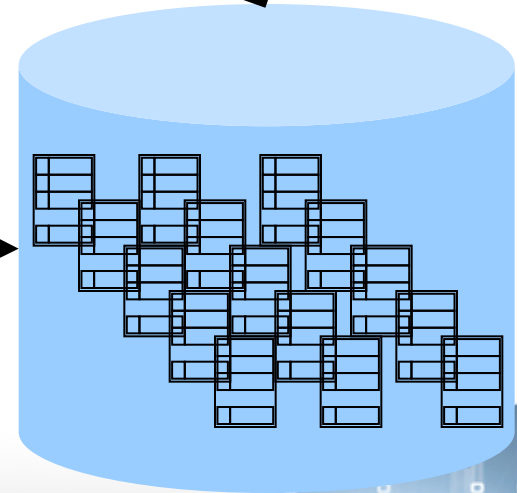
# CERA General Architecture



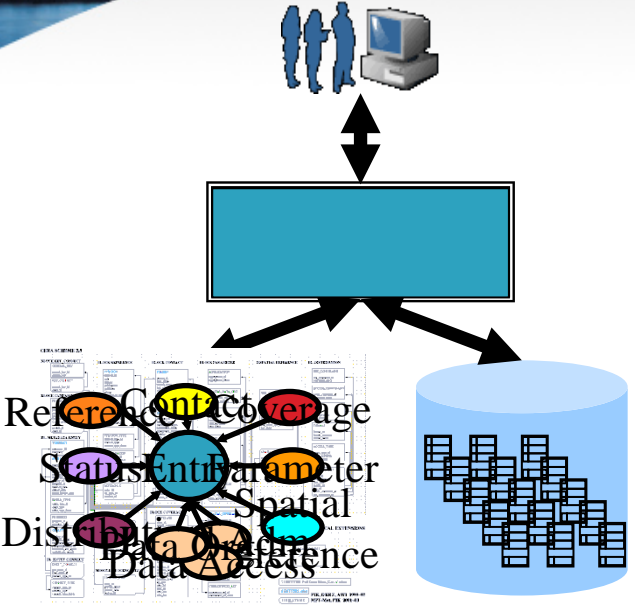
CERA2 Data Model



CERA2 Data Storage



# CERA as part of DKRZ infrastructure



StorageTek Silos  
Total Capacity:  
60000 Tapes  
Approx. 60 PB  
(LTO and Titan)

HPSS  
(10 Pbyte /a )





# WDCC / DOI

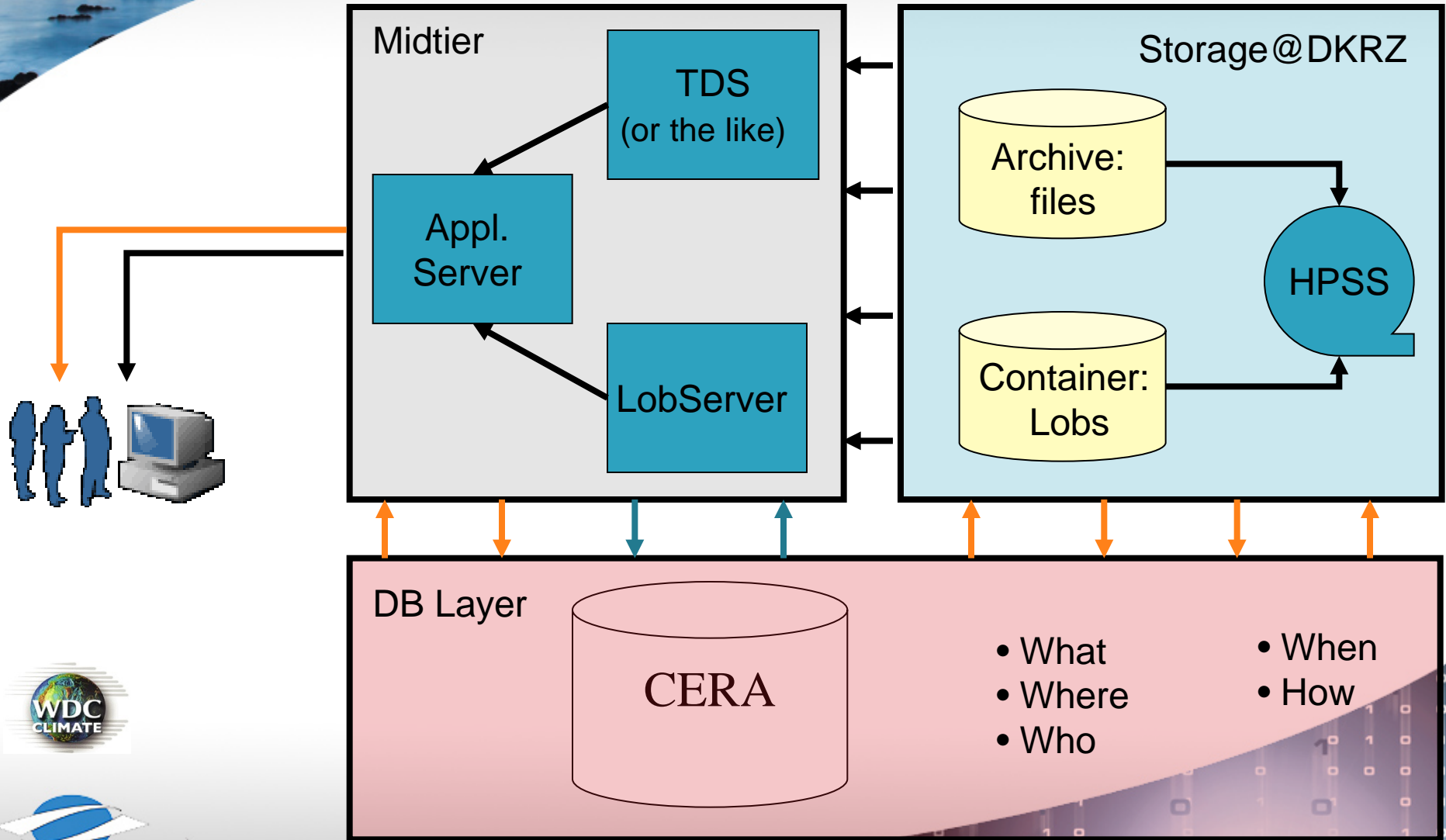
- ▶ Additionally WDCC offers the primary data publication service for final data entities which are of general scientific interest
  - Following the STD-DOI concept (Scientific and Technical Data – Digital Object Identifier, URL: [www.std-doi.de](http://www.std-doi.de))
  - Important aspects of the publication process are
    - The identification of **independent data entities** which are suitable for publication at the level of scientific literature,
    - The execution of an elaborated **review process** for metadata and climate data,
    - The assignment of additional **metadata for electronic publication** (ISO 690–2) and of **persistent identifiers** (DOI / URN) and
    - The integration of publication metadata and persistent identifiers into the **TIB library catalogue** (Technical Information Library, Hannover) so that primary data entities are searchable and citable together with scientific literature.
    - Quality characteristic is presently “**approved by author**”, future development should be “**peer reviewed**”.



# ACLs and Statistics

- ▶ It is often required to manage ACLs
  - Data owners want to publish papers before others start using the data
  - Commercial use shall be prohibited
- ▶ Statistics on data usage are necessary
  - Data owners want to know how often or who uses their data
  - In case of problems or new versions users can be informed
  - Gives important information how data shall be stored in future projects

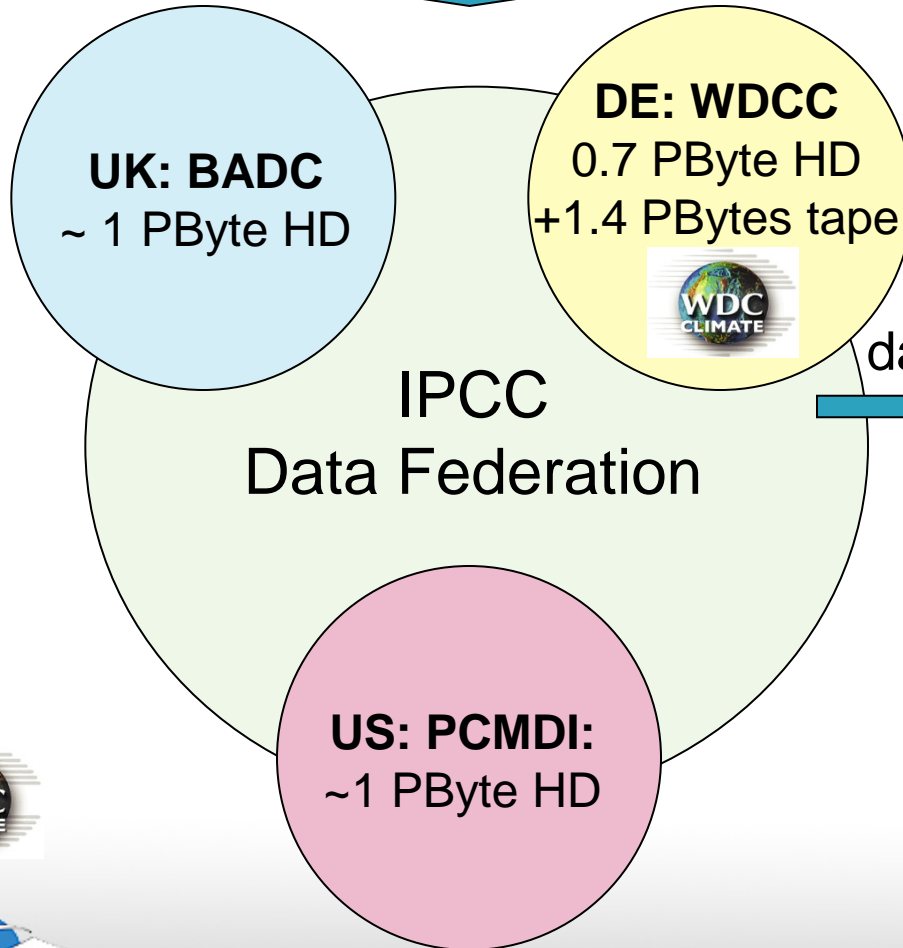
# WDCC data access



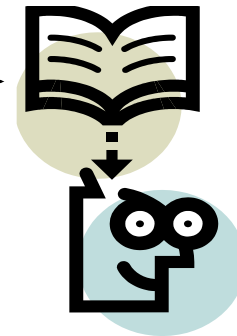


# WDCC as IPCC / CMIP5 Data Node

model output



data evaluation



paper evaluation:

- UN
- WMO / UNEP
- IPCC



# Summary

- ▶ CERA as a basis for WDCC
  - CERA Metadata, DKRZ storage (disk, tape)
- ▶ Challenge: Integrate project data management into long term archival
  - More frequent changes in metadata and data
- ▶ Transition phase
  - Metadata and data components



Thank you!

Contact

[hannes.thiemann\(at\)zmaw.de](mailto:hannes.thiemann@zmaw.de)

